

CTL 250FR FOREST CRAWLER



MOBILE

SOLIDE

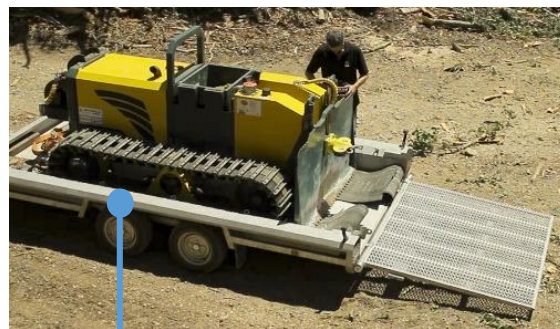
RELIABLE

Powerful 6 t ADLER winch

2.500 kg



Solide crawler chassis



Easy transport

Forest crawler	CTL 250FR
Engine	YANMAR 4-Cyl. Diesel, Engine output: 37 kW / 50 PS Fuel capacity: 30 l
Hydraulic	50 cm ³ Load-Sensing hydraulic pump with integrated power controller, capacity 100 l, hydraulic oil cooler with thermo control
Power Train	2 hydraulic powered wheels with integrated brakes, continuous hydraulic driving, up to 8 km/h, 2 different driving modes
Chassis	Reliable rubber tracks, 400 mm wide
Winch	ADLER EHY6 pulling force 60 kN cable capacity: max. 110 m at Ø 11 mm / 80 m at Ø 12 mm
Rear blade	1.700 mm wide with 250 mm height-adjustable pulley
Remote control	HBC radiomatic „linus 6“ with ergonomic control panel and charging station, receiver FSW 727
Available equipment	<ul style="list-style-type: none"> ▪ ADLER EHY6-PH pulling force 65 kN cable capacity: 150 m, Ø 12 mm ▪ ADLER EHY8-PH pulling force 75 kN cable capacity: 150 m, Ø 12 mm ▪ Traction aid winch pulling force 0 - 23 kN, cable capacity: 65 m, Ø 10 mm Dyneema-rope ▪ Three-point attachment ▪ Special painting (RAL)
Dimensions / Weight	L/W/H/: 2.700 mm / 1.700 mm / 1.600 mm Series: 2.500 kg
Info	Central electric with operating hour counter and 12V connector, bonnet with service flap, underride guard, rollover bar, lashing eyes, 2 x LED working lights rear, chainsaw rack, lockable toolbox